

Tablo 1: DSI Akım Gözlem İstasyonları

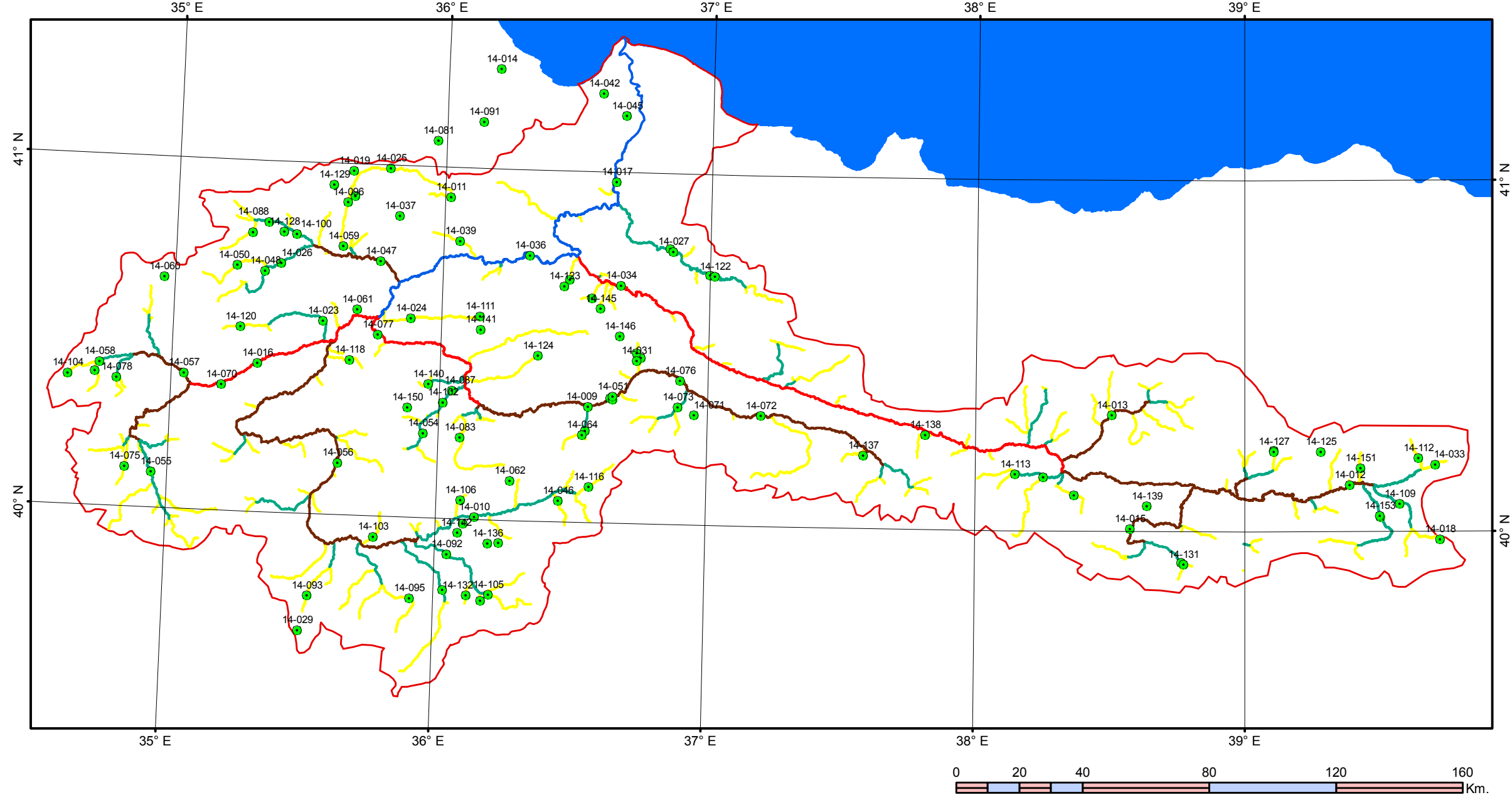
Station No	Location		Monthly Data		Station No	Location		Monthly Data		Station No	Location		Monthly Data	
	X	Y	From	To		X	Y	From	To		X	Y	From	To
14-001	36,839355	40,356763	1965	1969	14-056	35,633815	40,149318	1967	1971	14-108	39,505831	40,041338	1985	2000
14-002	35,239392	40,381192	-	-	14-057	35,050039	40,387172	1967	1995	14-109	39,578053	40,079394	1985	2000
14-003	38,369000	40,104000	1964	1970	14-058	34,734170	40,408912	1972	1973	14-110	34,839208	40,109950	-	-
14-004	36,918421	40,589827	-	-	14-059	35,624302	40,766986	1968	1971	14-111	36,145051	40,580018	1986	2000
14-005	36,795021	40,638405	-	-	14-060	34,961837	40,658967	1968	1969	14-112	39,648052	40,210505	1986	1998
14-006	36,012892	40,904264	-	-	14-061	35,684540	40,587194	1968	1968	14-113	38,149800	40,162799	1998	1988
14-007	36,047686	40,888211	-	-	14-062	36,273832	40,114975	1968	2000	14-114	36,178442	39,770917	1987	2000
14-008	35,994945	40,910622	-	-	14-063	35,604461	40,590773	-	-	14-115	34,976512	40,663415	-	-
14-009	36,556328	40,331167	1960	1965	14-064	36,537024	40,251315	1968	1969	14-116	36,566543	40,103709	1987	1995
14-010	36,145905	40,008080	1961	1968	14-065	35,840667	40,902511	-	-	14-117	36,732306	40,488560	1965	2007
14-011	36,022362	40,916192	1961	1999	14-066	35,504137	40,893786	-	-	14-118	35,662371	40,443659	1989	1990
14-012	39,393516	40,132808	1963	1964	14-067	36,087835	40,394172	-	-	14-119	36,104249	39,989030	1988	2000
14-013	38,508340	40,332727	1962	1972	14-068	35,065633	40,346587	-	-	14-120	35,253167	40,527251	1989	1996
14-014	36,195387	41,285428	1964	2004	14-069	38,905454	40,321048	-	-	14-121	36,850167	40,786938	1990	2006
14-015	38,578268	40,008861	1963	1983	14-070	35,189060	40,359066	1968	1969	14-122	37,019012	40,711801	1990	1999
14-016	35,320599	40,423222	1964	1966	14-071	36,952869	40,315448	1968	1974	14-123	36,455840	40,672251	1992	1998
14-017	36,641545	40,973309	1965	1971	14-072	37,201415	40,317328	1968	1971	14-124	36,365690	40,473800	1990	1996
14-018	39,726662	39,976894	1966	2002	14-073	36,891907	40,336422	1968	1974	14-125	39,286389	40,227727	1998	1999
14-019	35,654279	40,980886	1966	1999	14-074	36,327988	40,798764	-	-	14-126	39,110891	40,232224	1990	2000
14-020	35,661786	40,910416	1968	1991	14-075	34,843652	40,113839	1969	1984	14-127	39,110097	40,228082	1989	2000
14-021	36,511705	41,045645	-	-	14-076	36,897519	40,411515	1969	1970	14-128	36,401573	40,801112	1992	1997
14-023	35,559476	40,551371	1965	1999	14-077	35,764732	40,517680	1969	1972	14-129	36,581275	40,940439	1992	1995
14-024	35,885970	40,567899	1964	2004	14-078	34,800041	40,366061	1972	1991	14-130	38,766464	39,913017	1992	1997
14-025	35,792788	40,992022	1965	1972	14-079	36,646913	40,353844	1969	1969	14-131	38,776826	39,907347	1992	1997
14-026	35,394380	40,711415	1965	1999	14-080	36,038363	39,797728	1970	2000	14-132	36,125248	39,783759	1992	1996
14-027	36,860053	40,779068	1965	1965	14-081	35,967098	41,075339	1973	2000	14-133	35,805496	40,769926	1995	2000
14-028	36,547347	40,262049	1965	1968	14-082	34,856455	40,211171	-	-	14-134	36,238431	39,936286	-	-
14-029	35,508368	39,668839	1967	1987	14-083	36,083652	40,232973	1970	1987	14-135	34,961984	40,277172	-	-
14-031	36,733357	40,466061	1966	1970	14-084	36,476852	40,691275	-	1971	14-136	36,199456	39,933342	1995	2000
14-032	36,748689	40,474919	1966	1984	14-085	36,561607	40,641136	1970	1973	14-137	37,583682	40,210448	1995	2000
14-033	39,710274	40,191061	1967	1999	14-086	37,022434	40,522041	-	-	14-138	37,814515	40,269900	1995	2000
14-034	36,669059	40,679368	1965	1972	14-087	36,049585	40,366405	1970	1971	14-139	38,640223	40,073117	1995	2000
14-035	36,762649	40,652359	-	-	14-088	35,343275	40,826856	1970	2000	14-140	35,959722	40,382607	1995	2000
14-036	36,323798	40,757010	1968	1971	14-089	34,856974	40,668168	-	-	14-141	36,149339	40,541619	1995	2000
14-037	35,831621	40,857777	1967	1970	14-090	34,914870	40,550174	-	-	14-142	36,086369	39,962010	1995	2000
14-038	35,990473	40,807432	-	-	14-091	36,136275	41,134052	1972	1972	14-143	35,610695	40,243609	-	-
14-039	36,060934	40,792207	1970	1970	14-092	36,047692	39,899421	1972	2000	14-144	37,039662	40,366046	-	-
14-041	36,159986	40,395981	-	-	14-093	35,538645	39,767728	1975	1999	14-145	36,593107	40,611848	1995	2000
14-042	36,585667	41,224841	1967	1991	14-094	38,253000	40,154000	1970	1971	14-146	36,668751	40,535260	1995	2004
14-043	35,470120	40,883503	-	-	14-095	35,916142	39,770783	1971	1991	14-147	36,292162	39,942442	-	-
14-045	36,674624	41,163491	1968	1972	14-096	35,636680	40,892574	1971	1971	14-148	37,878613	40,247102	-	-
14-046	36,454300	40,062336	1967	1991	14-097	37,001820	40,713864	1971	1972	14-149	36,661652	40,437204	-	-
14-047	35,765696	40,727204	1968	1991	14-098	36,499757	41,221509	-	-	14-150	35,884000	40,313211	1995	2000
14-048	35,336161	40,687378	1967	1969	14-099	36,699713	40,895427	-	-	14-151	39,433332	40,181338	1995	2000
14-049	36,211014	40,587454	-	-	14-100	35,450034	40,795814	1972	1973	14-152	34,667543	40,393561	-	-
14-050	35,230593	40,700783	1967	2000	14-102	36,015504	40,331528	1972	1985	14-153	39,503109	40,045459	2001	2002
14-051	36,647299	40,363399	1968	1972	14-103	35,775865	39,941894	1978	1996	14-154	36,080920	40,198396	-	-
14-052	35,283517	40,795854	1967	1975	14-104	34,617543	40,371617	1982	1993	14-155	36,066896	40,166061	-	-
14-053	36,392056	40,542497	-	-	14-105	36,207881	39,788160	1979	1994	14-156	36,333361	40,682728	-	-
14-054	35,945906	40,241098	1969	1985	14-106	36,092648	40,055395	1979	2000	14-157	36,266694	40,282728	-	-
14-055	34,942736	40,102299	1969	1996	14-107	34,716709	40,382728	1987	1992	22-002	37,001594	41,216413	-	-

YEŞİLIRMAK HAVZASI

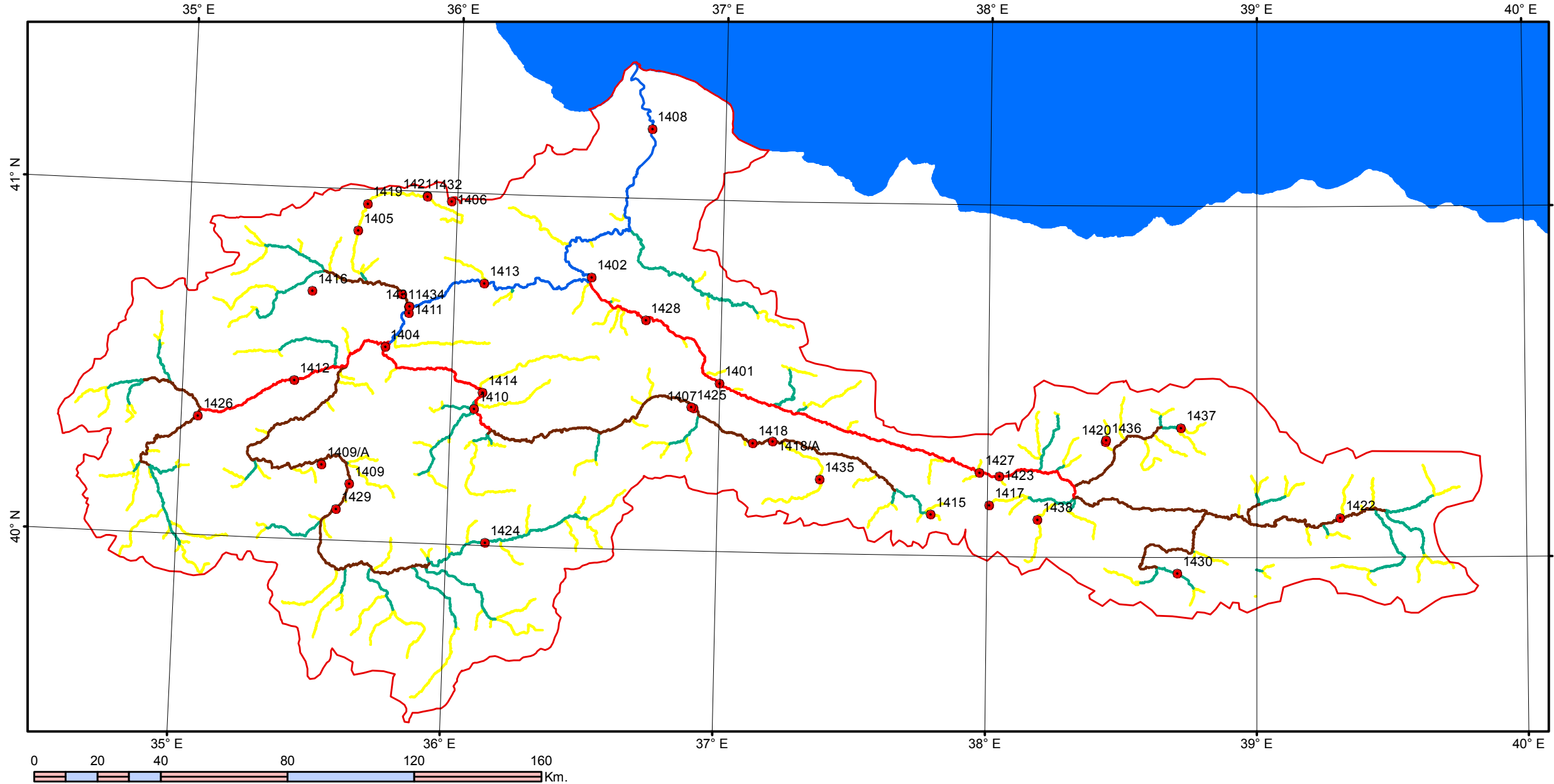
Harita 7: Akarsu Akım İzleme Geçmişi

1/1 500 000

7.1 DSI Akım Gözlem İstasyonları



7.2 EİE Akım Gözlem İstasyonları



Tablo 2: EIE Akım Gözlem İstasyonları

Station No	Location		Monthly Data		In Operation
	X	Y	From	To	
1401	36,998889	40,478333	1938	2005	Y
1402	36,512500	40,771667	1938	2005	Y
1403	35,807500	40,706389	1952	1962	N
1404	35,750000	40,555278	1952	1968	N
1405	35,634167	40,883889	1951	1960	N
1406	35,979167	40,975556	1952	1960	N
1407	36,905556	40,407222	1955	1960	N
1408	36,725278	41,198611	1968	1998	N
1409/A	35,531111	40,214167	1953	1996	N
1409	35,635833	40,162778	1953	1996	N
1410	36,088333	40,387500	1953	1955	N
1411	35,833611	40,653611	1953	1974	N
1412	35,417500	40,451667	1954	2005	Y
1413	36,119444	40,744444	1955	2005	Y
1414	36,118056	40,434167	1955	2005	Y
1415	37,793889	40,117778	1956	1966	N
1416	35,470833	40,707222	1960	1965	N
1417	38,009444	40,145278	1962	1966	N
1418/A	37,201944	40,317500	1960	1963	N
1418	37,128611	40,311667	1963	2005	Y
1419	35,666389	40,960278	1963	1990	N
1420	38,439722	40,328056	1962	1966	N
1421	35,888333	40,987500	1965	1968	N
1422	39,311667	40,112500	1969	2005	Y
1423	38,045833	40,228889	1969	1980	N
1424	36,146389	40,008056	1969	2005	Y
1425	36,897222	40,410833	1969	1991	N
1426	35,064167	40,339167	1969	1991	N
1427	37,972500	40,238056	1980	2005	Y
1428	36,718611	40,654167	1990	2005	Y
1429	35,590000	40,088333	1997	2005	Y
1430	38,707778	39,955556	1998	2005	Y
1431	35,834167	40,671667	2000	2000	N
1432	35,887500	40,986944	2000	2005	Y
1434	35,836389	40,673333	2001	2005	Y
1435	37,378611	40,212778	2005	2005	Y
1436	38,441667	40,333611	2006	-	Y
1437	38,720556	40,369722	2006	-	Y
1438	38,189167	40,105000	2008	-	Y

Legend

- DSI Akım Gözlem İstasyonları
- EIE Akım Gözlem İstasyonları

